

Great Downtown Periphery Space

Flexible Office Space, Central Spokane!

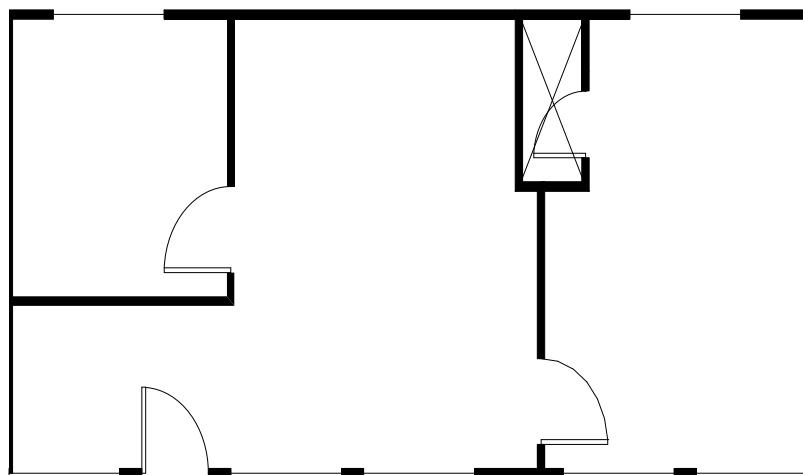


**Taylor Building
Suite 104
106 W. Mission**

- **Suite 104 Available:
568 Sq. Ft.**
- **\$11.00 per sq. ft. fully
serviced**
- **\$520.66 per month**
- **Lease Term Negotiable**
- **One Block West Of
Division & Ruby Street
Couplet**

Amenities Include:

- **Lower Level Suite Separate
Entrance rom Building**
- **Large Oversized Windows
For Plenty Of Light**
- **Suite Has Own HVAC**
- **On-Site and Off-Street
Parking**
- **Signage Available**



Taylor Building Suite 104, 568 Sq. Ft.



Call Bill Butler for Additional Information

P.O. Box 21469 Spokane, WA 99201 509-533-0995 fax 509-533-0997

bill@webpropertiesinc.com